

SLRHC Credentialing Examination
Vascular Access

Circle the best answer.

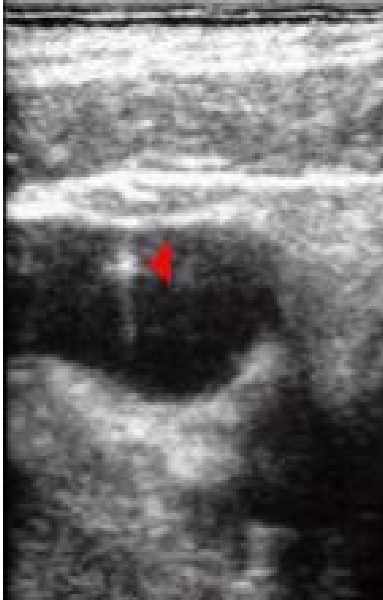
- 1) The best probe for vascular access guidance is a HIGH/LOW frequency probe with a FLAT/CURVED footprint.
- 2) As compared to arteries, veins DO/DO NOT collapse and DO/DO NOT tend to pulsate. Veins may pulsate in the setting of CPR.

Fill in the blanks.

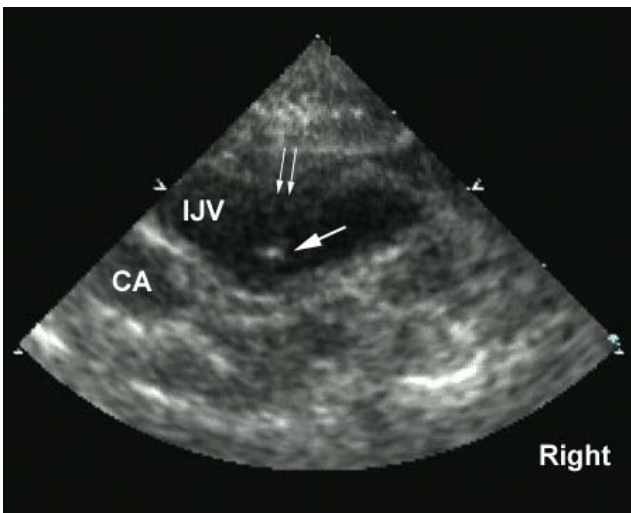


- A. _____
B. _____

The estimated distance that the needle would be advanced to obtain a flashback of blood is _____ cm.



The sonographic artifact represented is _____.



The sonographic effect on the vessel wall is called _____.

TRUE/FALSE Ultrasound decreases the complication rate with central access.

TRUE/FALSE Ultrasound can help with peripheral access especially in the difficult stick patients.

TRUE/FALSE Ultrasound in vascular access can be a static or dynamic process.