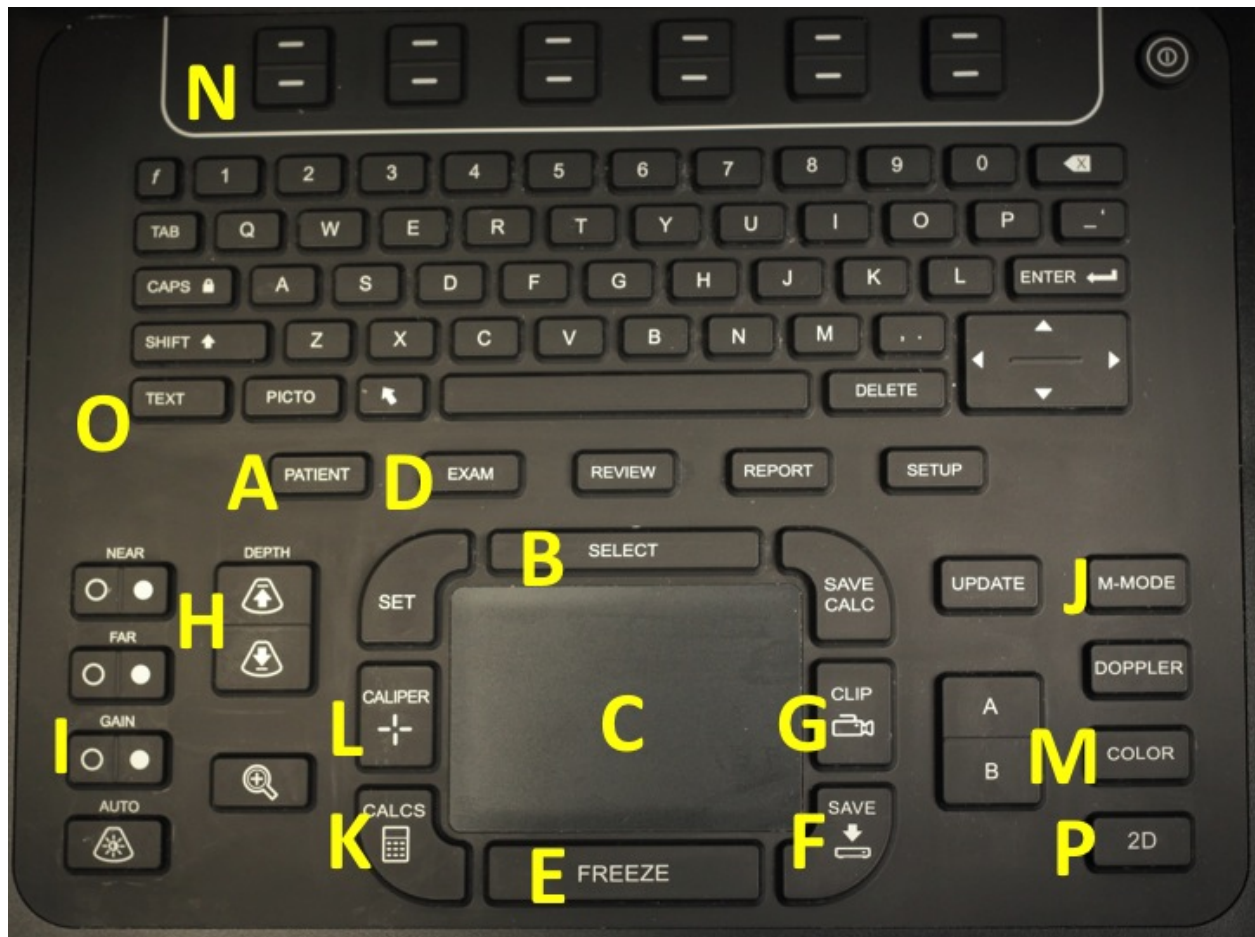


## Ultrasound: The 16 buttons you need to know.



**A - Patient:** Start every study by pressing this button. This is where you will type the patient's MRN in the "ID" box, input your chpnet ID under "Reading Dr" and your attending's chpnet ID under "Referring Dr"

**B - Select:** Use it like the clicker on a laptop trackpad.

**C - Trackpad:** Like that of a laptop. Moves the cursor.

**D - Exam:** Optimizes the frame rate and grayscale for different applications; e.g. the phased array probe has settings here for cardiac, abdominal, or obstetrical studies.

**E - Freeze:** Freezes whatever is on screen; you can swipe the trackpad to rewind or advance.

**F - Save:** Saves a still image of whatever is on screen.

**G - Clip:** Saves a short video clip (default, 6 seconds) of whatever is on screen.

When it "beeps," the clip has stopped recording.

**H - Depth:** Increasing the depth will bring deeper structures into view; decreasing it will do the opposite. Use this to bring whole structures of interest into the screen area (pericardial sac), or specifically focus on a superficial structure (peripheral vein).

**I - Gain:** Increases/decreases the overall brightness of the picture. "Near" and "Far" adjust the gain for the superficial and deep field of view, respectively.

**J - M-mode:** Motion mode. Press once to generate a line or "icepick" over the structure of interest. Press a second time to generate the m-mode image. Used to visualize the fetal heart rate.

**K - Calc:** Used to calculate fetal heart rate.

**L - Caliper:** Used to measure the distance between 2 points. The trackpad moves each caliper; pressing select switches which caliper you can move.

**M - Color:** Generates a color doppler field, which can be used to observe blood flow and direction.

**N - Soft keys** - You will see functions along the bottom of the screen in line with these top buttons. To choose one, press the corresponding button. The ones you should know for now are:

- Guide: Generates a guide marker line to assist with procedures such as an IV or central line. Mainly used with the small linear probe. Turn it off for any non-procedural applications (such as the FAST exam).

- New/End: Press this every time you BEGIN and END a study. Before you begin putting in patient info, press this button. Then, after you're done with the study, go BACK to the patient window and press this button again.

**O - Text:** Press this button and start typing on the keyboard to generate text. You should use this to label or add a description of the image you are capturing and the orientation, e.g. "R KID LONG" or "GB TRANSVERSE"

**P - 2D:** This is like an "escape" key. Pressing this will always bring you back to the probe's basic view.