

Credentialing Examination- DVT

- 1) The main indication for emergency sonography of the swollen extremity is:
 - A) Identify cellulitis
 - B) Identify abscess
 - C) Identify a Baker's cyst
 - D) Identify a non-compressible vessel
 - E) None of the above

- 2) The correct sequence of branches of lower extremity venous system:
 - A) External iliac, common femoral, popliteal, deep and superficial femoral
 - B) Popliteal, common femoral, deep and superficial femoral, external iliac
 - C) Deep and superficial femoral, popliteal, external iliac, common femoral
 - D) External iliac, common femoral, deep and superficial femoral, popliteal
 - E) Common femoral, external iliac, deep and superficial femoral, popliteal

- 3) All of the following suggest the presence of a lower extremity DVT EXCEPT:
 - A) Compressibility of the vessel
 - B) Lack of augmentation
 - C) Lack of pulse wave Doppler wave form
 - D) Swollen red leg
 - E) Pulmonary embolism on chest CT

- 4) Techniques to better scan the common femoral vein include all of the following EXCEPT:
 - A) Abduct at hip and flex at the knee
 - B) Trendelenburg position
 - C) Reverse Trendelenburg position
 - D) Use copious amount conducting gel
 - E) Use a high frequency probe

- 5) Techniques to better scan the popliteal vein include all of the following EXCEPT:
 - A) Hang leg over the edge of the bed
 - B) Trendelenburg position
 - C) Reverse Trendelenburg position
 - D) Use copious amount of conducting gel
 - E) Use a high frequency probe

- 6) True/False The SLR criteria for DVT evaluation involved the 3 location compression technique. These are the common femoral vein, the deep and superficial femoral vein and the popliteal vein

- 7) Which of the following suggests a normal exam to exclude a DVT?
 - A) The lumen of the vessel disappears completely with compression
 - B) The lumen of the vessel contains an isoechoic substance
 - C) The vessel pulsates due to the adjacent artery
 - D) The vessel wall is hyperechoic and thick

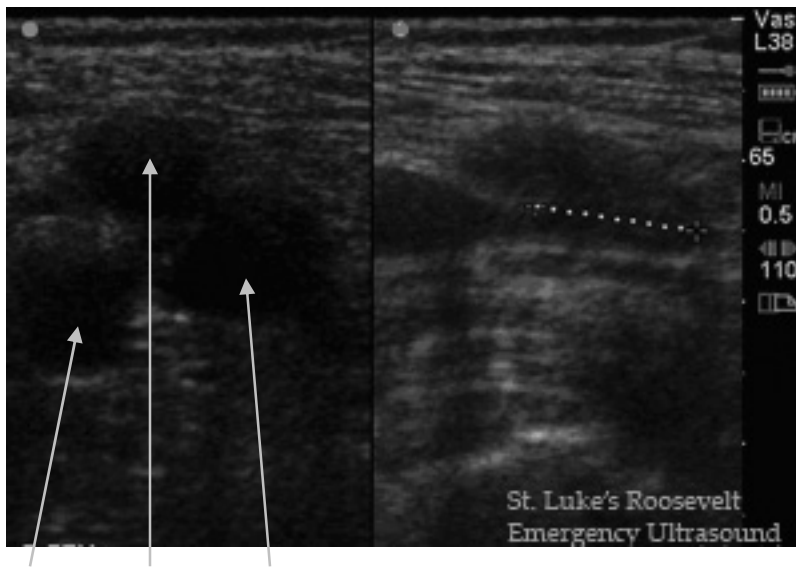
- 8) True/False The SLR criteria for DVT evaluation may miss a segmental DVT albeit rare. For this reason, it is recommended that a repeat DVT evaluation be performed in 5-7 days.

9) All of the following may mimic an acute DVT EXCEPT:

- A) Baker's cyst
- B) Lymph node
- C) Slow venous blood flow
- D) Old clot in the vessel wall
- E) Pulsatile artery

10) All of the following aid in distinguishing a lymph node from an uncompressible vein EXCEPT?

- A) Rotating the transducer to show the boundaries of the lymph node
- B) Moving the transducer proximally and distally to identify the edges
- C) Using Doppler
- D) Distance from the skin surface
- E) Using color flow



A **B** **C**

11. The above image of the lower extremity on the left is without compression. The image on the right is with compression.

Identify:

- A. _____
- B. _____
- C. _____

True/False This demonstrates a DVT
FEMORAL/POPLITEAL region is represented.



A

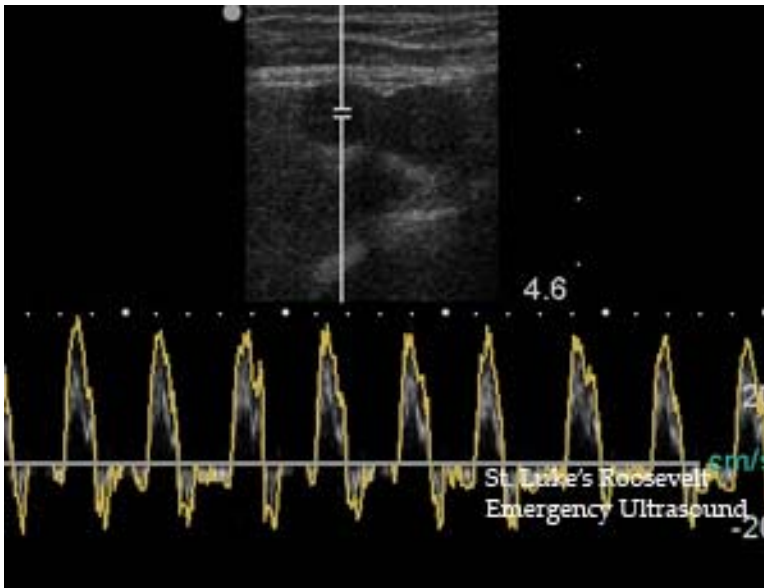
B

12. The above image on the left is without compression. The image on the right is with compression. Identify:

A. _____

B. _____

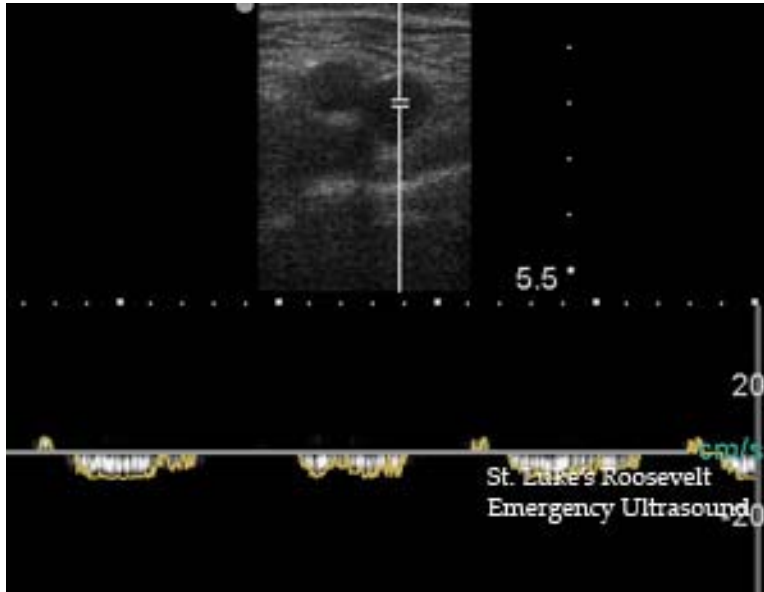
True/False This demonstrates a DVT
FEMORAL/POPLITEAL region is represented.



13. The above image demonstrates ARTERIAL/VENOUS waveform.

14. To obtain the above image, which button is pressed:

- A) 2D mode
- B) M mode
- C) A mode
- D) Doppler mode
- E) Color mode



15. The above image demonstrates ARTERIAL/VENOUS waveform.